



Center for Security Studies (KEMEA) - Activity information

KEMEA: NCP for ECI per Dir 2008/114

1. **Identifying end-user/operational needs** and security systems requirements
2. **Legal Team** specialized in Ethics analysis and processing legal aspects of innovative technological security solutions
3. **Flight Support Team** (pilots, technicians), drones (area mapping, 3D modelling, detection)
4. **Team of spatial and statistical analysis** of geographical data and information
5. **Communication & Dissemination Team**
6. **Vulnerability & Risk assessment Team** for critical infrastructures and public spaces security
7. **Specialized Team for Planning and Evaluation** of demonstrations, pilots, table-top and field-testing exercises
8. **Team of wireless telecommunications and anti-drone solutions**
9. **Technology Team for border surveillance**
10. **Natural hazards and Disaster Risk Management Team**



- 1 Institute of International Network and the study of extremism and terrorism – fight crime & terrorism
- 2 Critical Infrastructure Protection
- 3 Emergency Management & Civil Protection
- 4 Cyber security



Collaboration Research – authorities for CER

- ✓ **Article 12:** Risk assessment by critical entities → homogeneous methodology, risk criteria
- ✓ **Article 5 & per 1313/2013/EU:** Risk assessment by member states → collaboration with the National Civil Protection Agency, incl. the disruption of essential services and its societal impact
- ✓ **Article 10:** To support critical entities in resilience enhancement → guidance material, methodologies, support exercises organization, training
- ✓ **Article 13:** Resilience measures of critical entities → to propose scientifically informed technical, security and organisational measures for resilience enhancement, taking into account sectorial specifications

Standardization – legal/regulatory framework


- **Standards:** documents established by consensus between experts and approved by a recognized body. In security area they outline global best practices, oversee organizational structures and procedures, support decision making and promote traceability and information management.
 - reference documents, support alignment of actions, interoperability (operational, equipment), cross-border, cross-organizational collaboration.
 - Compliance with regulatory, political landscape further supports implementation/adoption of regulations & vice versa
- **CEN Workshop Agreements** (by CEN/CENELEC): reflect an agreement between individuals and organizations.
 - ✓ Results of pre-standardization activity, based on pre-normative research, favored by R&I projects and institutes.
 - ✓ More flexible and inclusive process – participation of multiple stakeholders interested and experts in the topic
 - ✓ Proposal for standardization for innovative solutions (tools, methods, etc) but not only
 - ✓ Faster than standardization

Incident situational reporting per CER

- **Article 15:** Critical entities shall notify the competent authority of incidents that significantly disrupt or have the potential to significantly disrupt the provision of essential services.
- **CWA 18024:2023 "Emergency management - Incident situational reporting for critical infrastructures"** (G. Sakkas, KEMEA proposer and leader)

CEN-WSIPCI-Draft CWA2 - Version 5

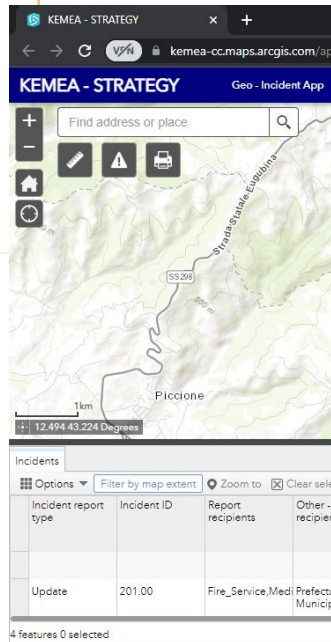
This online form is a tool for the application of the CWA "Emergency management - Incident situational reporting for Critical Infrastructures". It has been designed and implemented by the Center for Security Studies (KEMEA) in Greece, in the framework of the H2020 funded project STRATEGY (GA 883520).



This project has received funding from the European Union's Horizon 2020 research and innovation programme under grant agreement No 883520

- User and incident identifier
- Incident detailed description
- Risk description
- Actions
- Resources

Submit



INCIDENT REPORT
(CWA - Emergency Management - Incident situational Reporting)
FSK - 30 March 2023

USER AND INCIDENT IDENTIFIER

Incident Report type	Incident ID	Linked incident	Linked incident ID	CI Business name
Report	201	0	0	Valtfibrice Dam

INCIDENT DETAILED DESCRIPTION

Incident Creation Date/Time (Local)	Report recipients	CI Sector	Person or group reporting	Person authorized
3/29/2023 13:10	Fire_Service,Medical_emergency_services,Civil_protection,Police_authorities,other	Water - reservoir	Dam security team	Dam security officer

CONTACT INFORMATION

Contact email	Contact tel	Country (code)	IT
valdaem@valtfibrice-dam.it	+00		

INCIDENT BASIC INFORMATION DESCRIPTION

Incident type	Incident certainty
True Incident	HighlyConfident

Incident Occurrence Date/Time (local)	Area	Latitude (WGS84)	Longitude (WGS84)	Elevation (m)	Radius
3/30/23 7:05 AM	Valtfibrice area				

INCIDENT DESCRIPTION

Due to the earthquake a leak from the dam was observed which led to a dam partial collapse. The integrity of the dam has been seriously affected. Areas to the downstream of the dam are expected to be flooded.

ACCESSIBILITY STATUS

Not yet known. Main roads may be flooded. Suggestion to use alternative access of higher altitudes.

INCIDENT HAZARD AND IMPACTS

Hazard type	Incident severity (s)	Incident urgency (a)	Incident priority (p)
Dam collapse due to earthquake	Extreme	Immediate	Extremely critical priority / 4

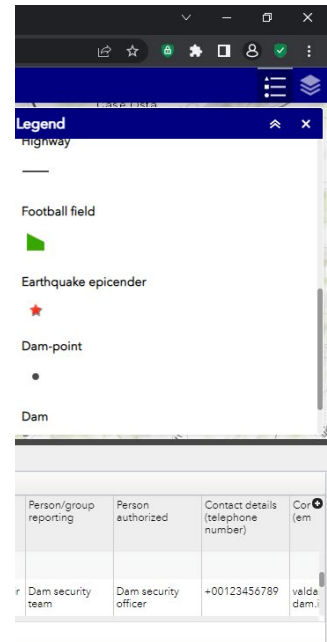
IMPACT DESCRIPTION

The dam has collapsed partially and its stability has been affected. Collapse may be expanded. Waters run already downstream with the risk to flood the areas below the dam (Valtfibrice, stadium and houses).

SCALE OF IMPACTS

Unknown / 0

CI Service affected	Human losses	Expected external impacts (to other CIs)	Other CI sector affected	Restoration time



Critical Infrastructure Protection & Procurement activities

The Commission should build on existing structures and tools, such as UCPM and EU Reference Network for CIP. It should inform MS about resources available at Union level, such as ISF, Horizon Europe or other instruments relevant for the resilience of critical activities.

→ Need for awareness of authorities & critical entities about availability of these instruments that could help them in resilience planning and risk management

- Support of critical entities and public authorities for their participation to:
 - Pre-commercial Public Procurement (PCP)
 - Public Procurement for Innovative solutions (PPI)
- ✓ Put in application innovative solutions developed specifically for the procurement of R&D services
- ✓ Support/train public entities in performing procurement processes
- ✓ Support public entities in procuring solutions that respond to their needs
- ✓ Help the public services to improve effectiveness and efficiency
- ✓ Solve problems based on communicated needs
- ✓ Meet new needs with solutions not currently available on the market