

# Slovenia

## Institutional Framework for migration and asylum\*

NATIONAL LEVEL

**The Government Office for the Support and Integration**  
 Provides accommodation, support and psychosocial assistance for asylum seekers. Each person granted protected status is provided accommodation at one of the integration houses and assigned an integration counsellor, who helps devise a personal integration plan.

**Ministry of Foreign Affairs**  
 Ministry's consular employees work on consular tasks, which include: issuance of passports, personal identity cards, visas, accepting applications and taking fingerprints for residence permits.

**Ministry of Public Administration**  
 Provides coordination of activities of administrative units in the area of personnel, finance and organization.

**Ministry of the Interior**  
 Directs and supervises the work of the Police. It also performs administrative tasks related to migration and naturalization of foreigners.




**Directorate for migration**  
 Planning, implementing and coordinating of national migration policy and legislation

**Ministry of Labour, Family, Social Affairs and Equal Opportunities**  
[www.gov.si](http://www.gov.si) (\*unified governmental webpage)  
 Covers rights and obligations of workers arising from labour, social protection rights and benefits for persons who acquire the permission for permanent residence.

**Ministry of Education, Science and Sport**  
 Provides primary and secondary education for migrants

**Ministry of Justice**  
 Manages directory of refugee Counsellors

LOCAL LEVEL

- Legend:
-  Cooperation
  -  Coordination
  -  Other input

**Administration units**  
 There are 58 administrative units, which are organized geographically. They carry out state administration tasks (e.g. issuance of residence permits).

**Social Work Centres**  
 There are 16 regional Social work Centers. They represent the main institution primary responsible for social security matters.

**Employment service of Slovenia**  
 An independent legal entity with public institute status. There are 12 regional and 59 local employment offices. The latter provide employment broking, career guidance.

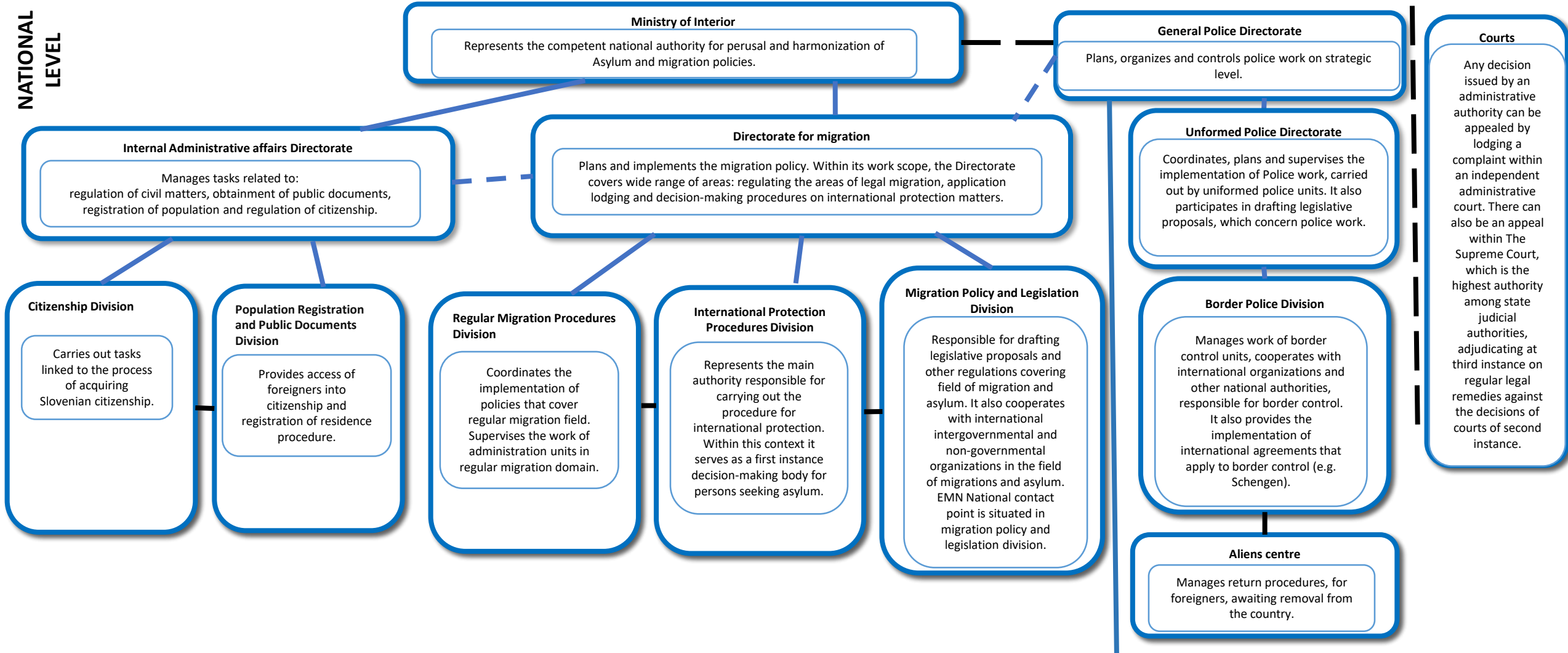


\*Please note that this institutional chart provides an indicative overview of the asylum and migration system in the m/s concerned on Januar 2022

# Slovenia

## Institutional Framework for migration and asylum\*

NATIONAL LEVEL



LOCAL LEVEL

- Legend:**
- — — — — Cooperation
  - ⋯ ⋯ ⋯ ⋯ ⋯ Coordination
  - Other input

**Police Directorates**

There are eight police directorates, which are responsible for the safety of persons and property on the regional level. They are headed by directors who are appointed and discharged by the Minister of the Interior upon a proposal by the General Police Directorate.



\*Please note that this institutional chart provides an indicative overview of the asylum and migration system in the m/s concerned on January 2022